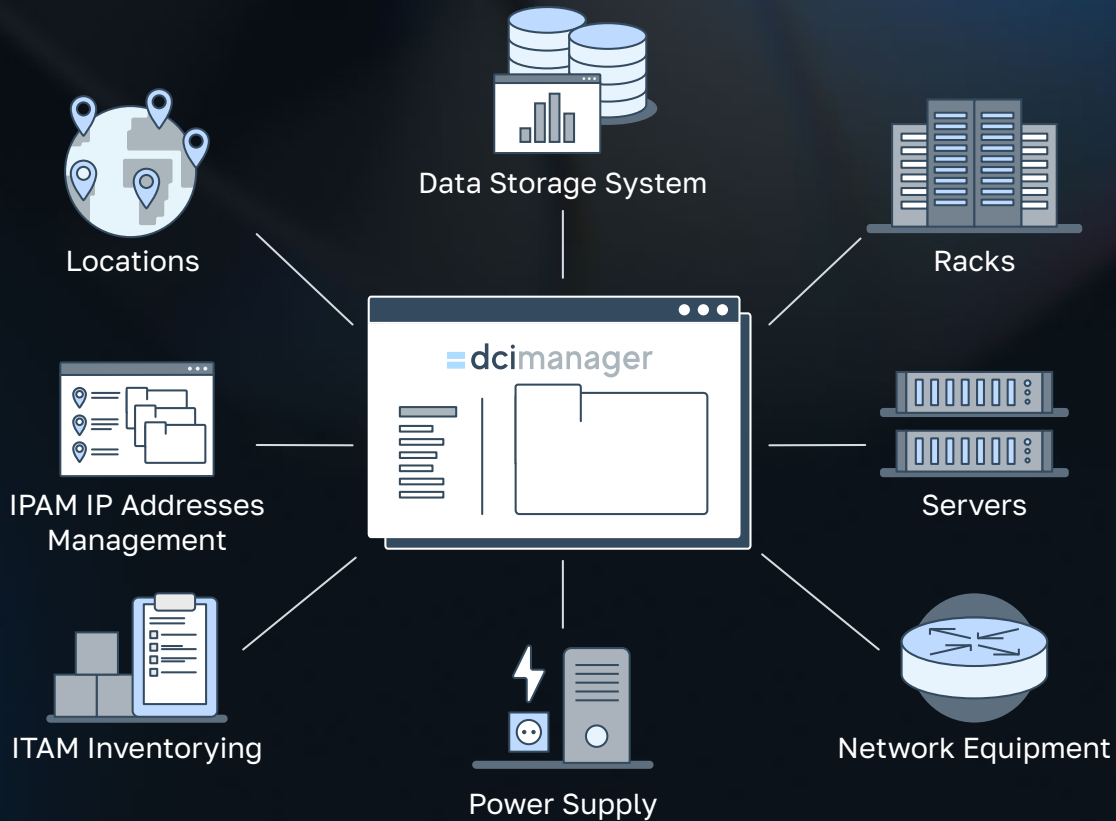


dcimanager

by ispsystem

Platform for multivendor IT infrastructure management in a single interface. The platform manages servers as well the entire hierarchy of physical server IT infrastructure of Russian and foreign vendors:

- server rooms;
- racks;
- servers;
- network hardware;
- power supply (PDU and UPS);
- data storage system.



Power management

DCIManager works with UPS and controlled sockets (PDU) allowing you to:

- keep track of connections, enable and disable ports;
- monitor the status of devices (including batteries);
- monitor power consumption and load;
- tariff power supply for colocation clients;

Address space accounting and management (IPAM)

DCIManager simplifies IP address management (IPv4 and IPv6) and allows you to:

- keep track of blank and filled IP addresses;;
- combine physical networks and IP addresses into pools;
- allocate IP addresses manually or automatically;
- check availability of IP addresses in the DNSBL;
- maintain history of IP address allocations and releases.

Management of geographically distributed infrastructure

DCIManager allows you to control the entire infrastructure in a common interface, even if you have dozens of data centers in different cities.

Amsterdam

The location in active

10 racks /10U available

80.87.203.1

London

The location in active

3 racks /15U available

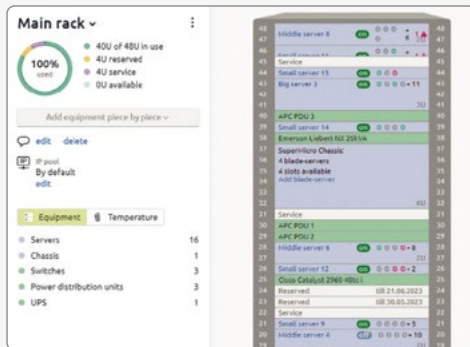
120.100.110.12

Visualization of hardware in racks and “Data center map”

DCImanager allows you to quickly find free units and reserve them for your equipment or colocation. The interactive equipment map shows:

- the amount of equipment of each type;
- free, occupied and reserved units;
- equipment errors and connection status;
- temperature sensor readings and signals
- power consumption.

“Data center map” module allows creating a map of data processing center showing the location of racks and floor-mounted UPS, structural elements, such as walls, doors, cold and hot aisles, as well as displaying hardware status and temperature of servers.



Problem Notifications

DCImanager informs administrators about important metrics and emergency situations:

- flexible customization of alerts by locations and servers;
- time limits for exceeding sensor readings.

This allows you to respond to incidents in a timely manner and increase fault tolerance of your infrastructure.

Remote server management and control

DCImanager works with a multivendor fleet of servers, monitors their status and predicts component failures at the physical level, without the usage of agents. DCImanager logs user actions, manages power, and automatically installs OS and software.

Remote management reduces staff labor costs and increases the speed of administration. Different types of equipment can be configured with a single tool.

Network hardware management

DCImanager works with network equipment from all popular vendors. It allows you to manage switches from different vendors in one convenient graphical interface:

- connect devices to ports and control port load;
- change port settings (speed, operating mode, trunk);
- manage IPv4 and IPv6 addresses;
- interconnect servers using VLANs;
- perform automatic inventory and manage VLANs directly from the interface.

Inventory Management of Storage System Components in Racks and in Warehouse

The DCImanager storage module manages disk arrays, network-attached storage (NAS), and software-defined storage (SDS), automating disk space allocation for servers and virtual machines.

Self-service portal for users

In the Client's profile, users can independently manage the resources allocated to them. For example, install the OS, monitor traffic consumption, reboot servers. This reduces load on the IT department, and users are able to solve their problems without waiting in line.

Equipment accounting with ITAM

DCImanager allows you to manage IT assets at all stages of their life cycle: from purchasing to decommissioning.

- keep an inventory of any type of equipment;
- control transitions and plan purchases;
- maintain operational history;
- track deliveries and status of service contracts.

Automatic inventory of components, as well as automatic tracking of their movements.

Name	ID	IP	Platform	Host	Chassis	Rack and unit
Blade server 20	20	192.168.0.19	SuperMicro Se...	disk.20.ser...		Main rack, U: 3
Blade server 19	19	192.168.0.19	SuperMicro Se...	disk.19.ser...		Main rack, U: 3
Blade server 18	18	192.168.0.19	SuperMicro Se...	disk.18.ser...		Main rack, U: 3
Blade server 17	17	192.168.0.18	SuperMicro Se...	disk.17.ser...		Main rack, U: 3
Small server 16	16	192.168.0.17	SuperMicro Se...	disk.16.ser...		Main rack, U: 1
Small server 15	15	192.168.0.16	SuperMicro Se...	disk.15.ser...		Main rack, U: 4
Small server 14	14	192.168.0.15	SuperMicro Se...	disk.14.ser...		Main rack, U: 3
Small server 13	13	192.168.0.14	SuperMicro Se...	disk.13.ser...		Main rack, U: 3
Small server 12	12	192.168.0.13	SuperMicro Se...	disk.12.ser...		Main rack, U: 2
Small server 11	11	192.168.0.12	SuperMicro Se...	disk.11.ser...		Main rack, U: 4
Small server 10	10	192.168.0.11	SuperMicro Se...	disk.10.ser...		Main rack, U: 1

User role management

DCImanager has different access levels to IT infrastructure, while user actions are logged. This ensures system security. You can use the built-in rights management solution as a standalone tool or integrate DCImanager with your user accounting system (AD/LDAP) and exercise centralized rights management.

The platform also allows you to authorize access for users only from specific IP addresses.

Ability to integrate with any solutions via API

All ISPSYSTEM platforms contain ready-made modules for integration with various software (e.g. billing platforms or Service Desk systems). A simple API system and detailed documentation with usage examples are available for connection of any software.

Supply management

In DCImanager you can maintain information about contractors and deliveries:

- keep equipment delivery records;
- attach delivery notes and other information to the records;
- specify the equipment cost;
- create a directory of counterparties.

DCImanager Roadmap



Do you have any questions left?

Our support is available 24/7

ispsystem.com
salesteam@ispsystem.com

1-929-237-11-65